

(see orig. survey  
C-54-298-)

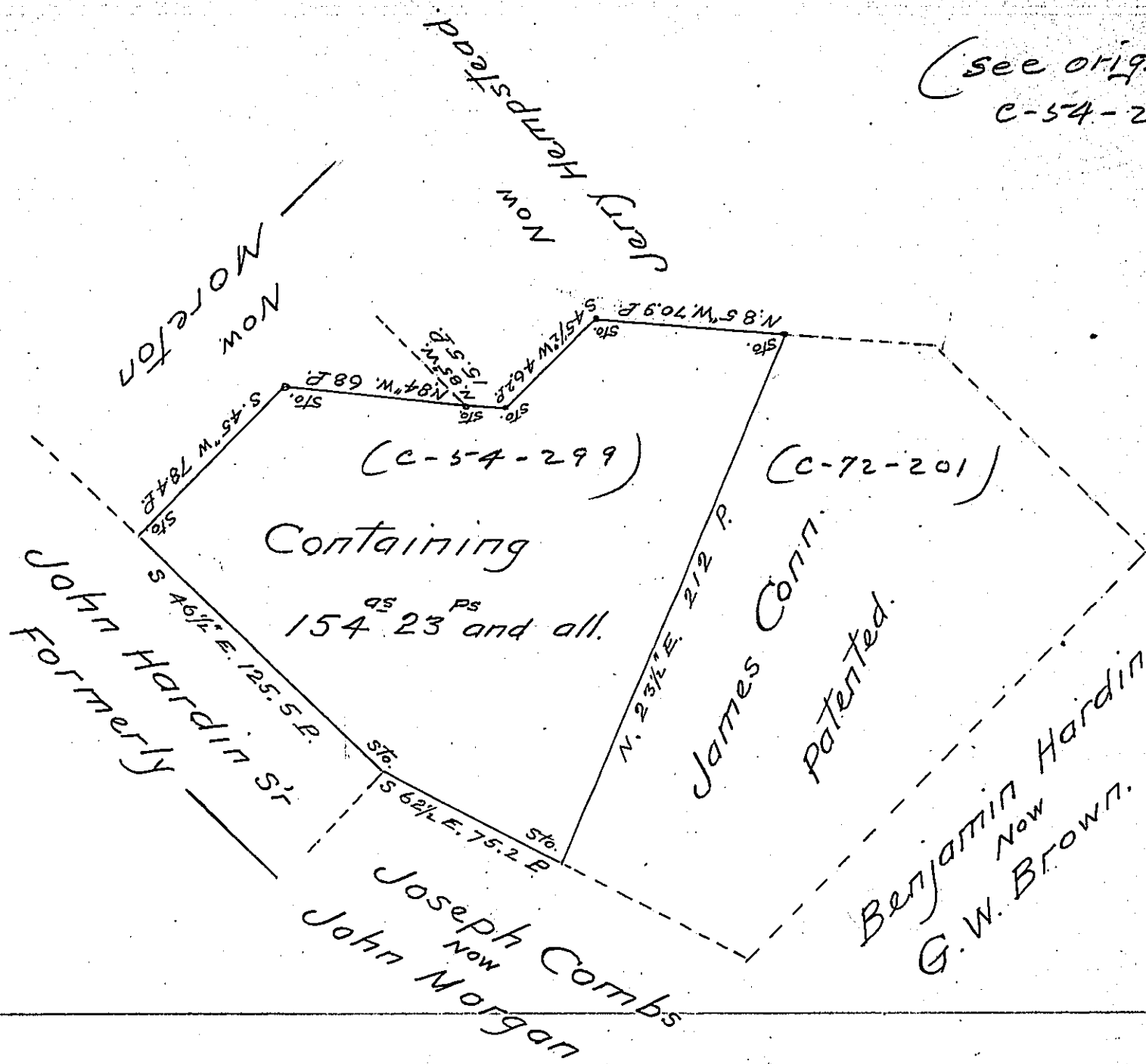


Diagram of a tract of land situate in -  
Springhill township Fayette County surveyed July  
2<sup>nd</sup> 1868 for William P Griffin esq'r in pursu-  
ance of an order of Survey No 3084 in the  
name of Mark Hardin dated the 19<sup>th</sup> day of  
April 1769. This land is nearly all cleared  
and improved for many years.

"Surv'd by A McLean the 18<sup>th</sup> of April 1770"

To J M Campbell esq'r  
SURVE. GEN'L

M. Dickson C.S  
for Fayette County

IN TESTIMONY that the above is a copy of the original remaining on file in  
the Department of Internal Affairs of Pennsylvania, made  
conformably to an Act of Assembly approved the 16th day of  
February, 1833, I have hereunto set my Hand and caused  
the Seal of said Department to be affixed at Harrisburg,  
this thirteenth day of December 1904.

*Loose P. Brown*  
Secretary of Internal Affairs.